

How to use WRC Maps

Legend



Start of Rally
(Finish of Rally)



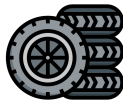
Start of Special
Stage



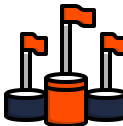
Service Park



Finish of Special
Stage



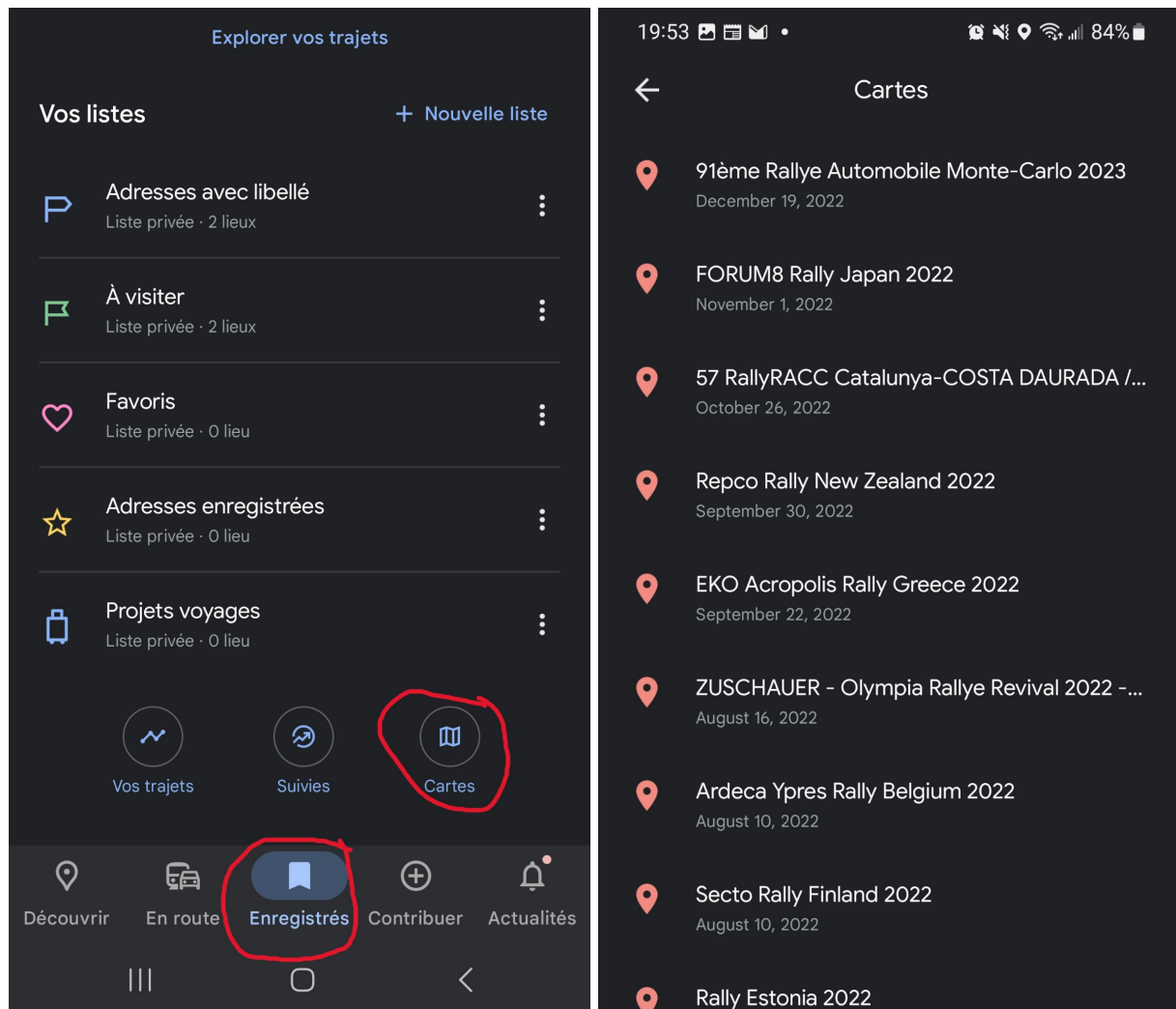
Tyre Fitting Zone

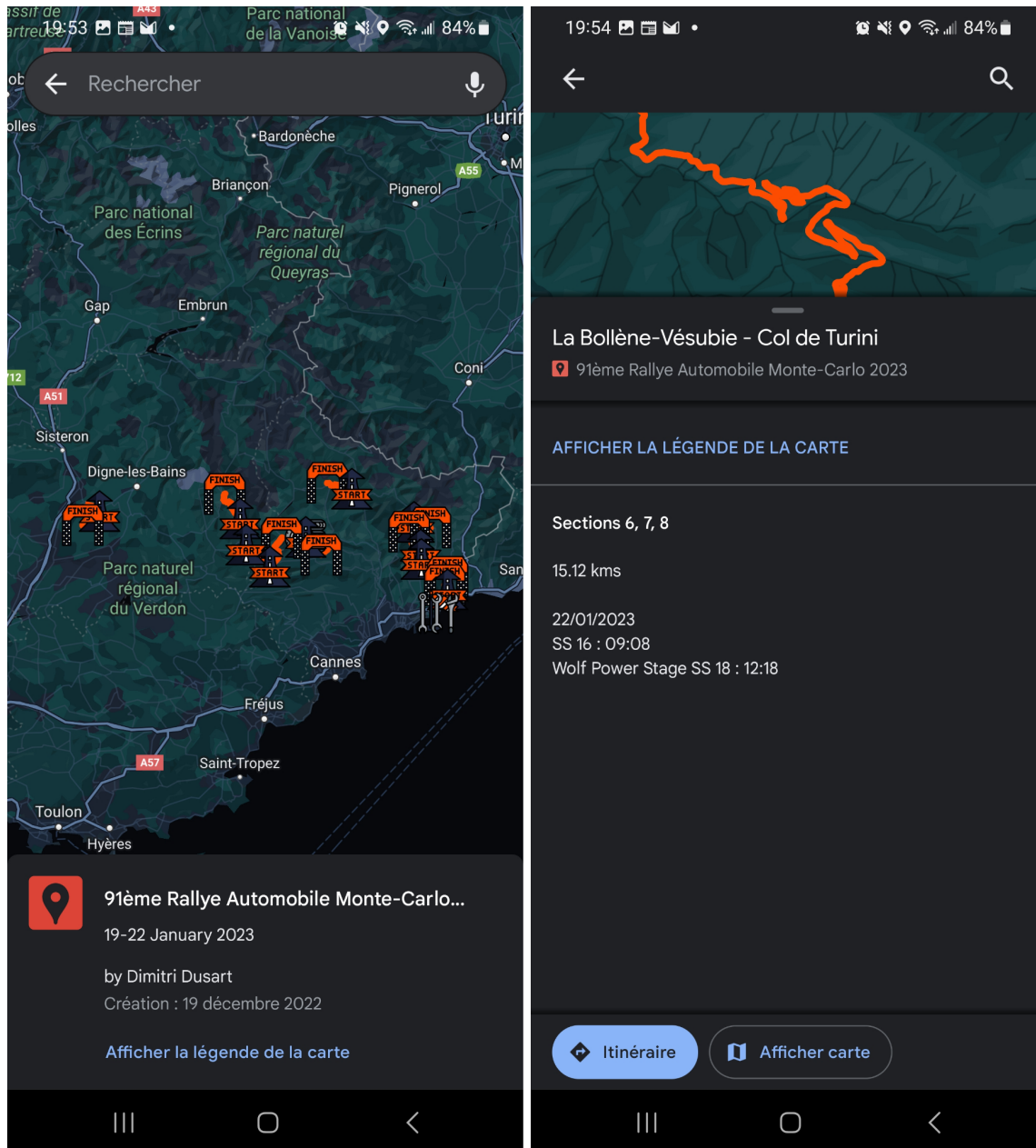


Finish of Rally

Using on Google Maps Mobile

First you must access the map on PlaneteMarcus with your Google Account connected. Like that the maps will appear on the maps list in your mobile app.





You can use the map the same way on your computer with touch controls. You can also add pinpoints to create itineraries. Connecting your phone to Apple CarPlay or Google Auto in your car can also drive you to your favorite spectator places.

Alternatively you can download the KMZ file to display in your Google Earth App (Web, Desktop with Google Earth pro or on iOS/Android app)

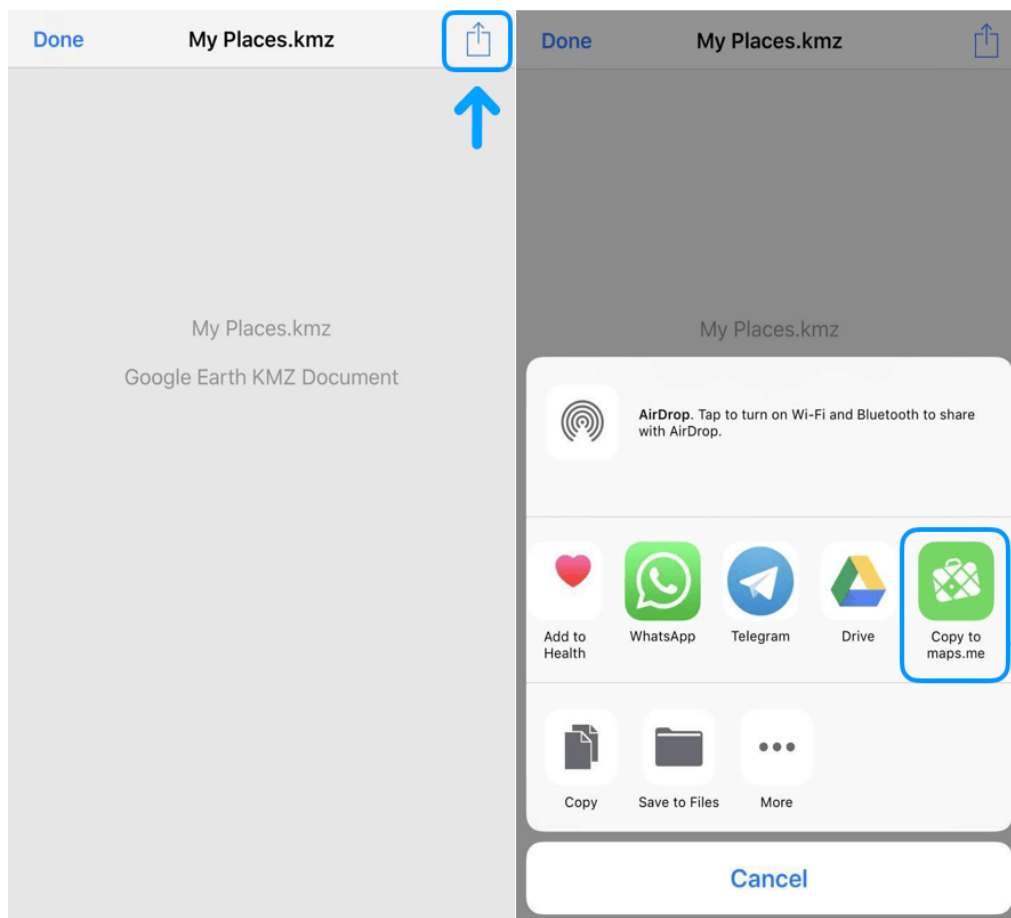
Using on Maps.me (offline maps, paid application)

You must click the Google Earth KMZ link on PlaneteMarcus to allow the possibility to open the map into Maps.me.

1. Open shared KML/KMZ file with bookmarks sent by email, instant messenger or cloud storage, for example, iCloud or Google Drive.

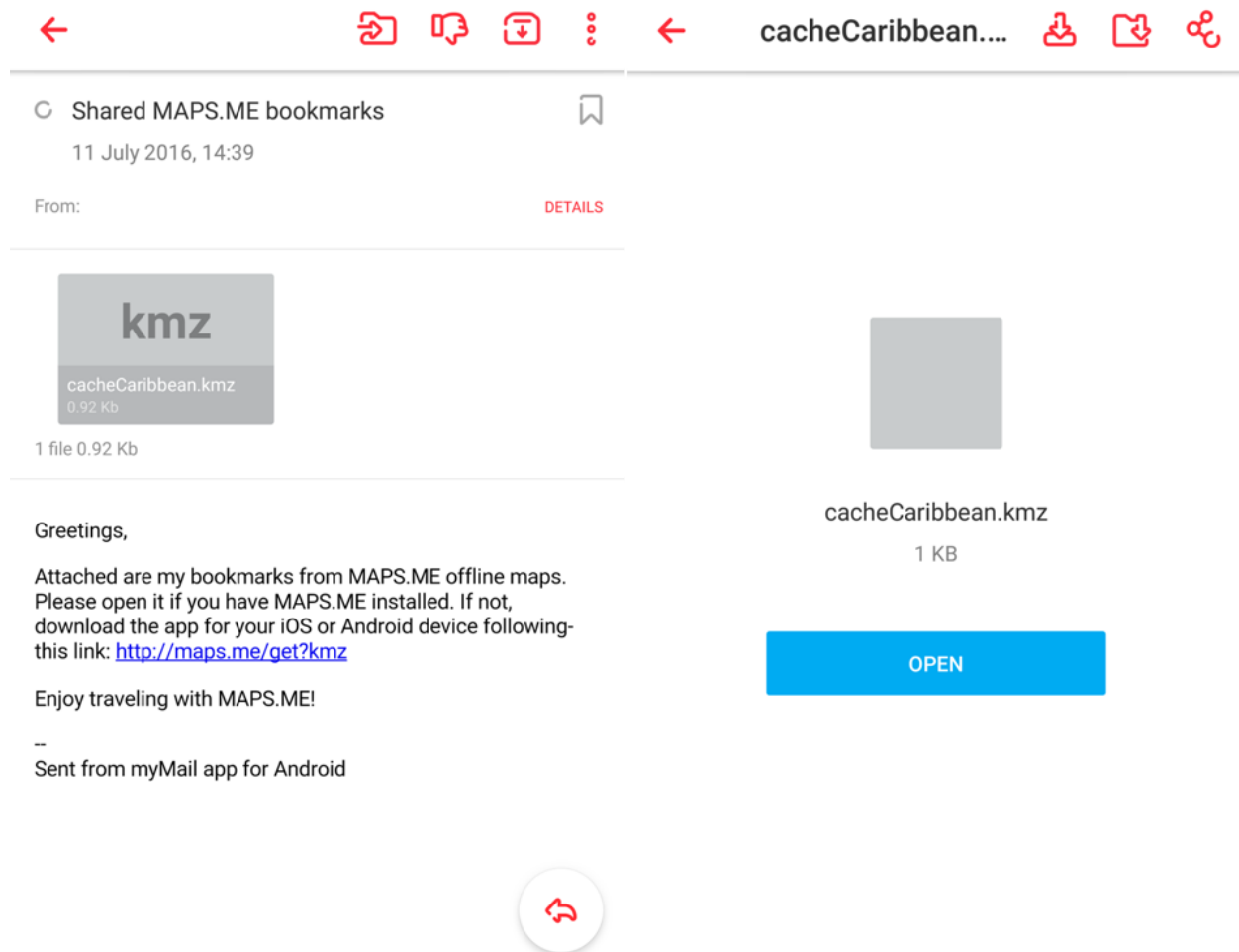
iOS

Tap the file with bookmarks (KML or KMZ format) → tap "**Share**" button in the upper right corner → choose "**Copy to maps.me**" in the pop-up window.



Android

Tap the file with bookmarks (KML or KMZ format) → choose "**Open with MAPS.ME**" in the pop-up window (if you have no other apps that support KML files, the file will be instantly open in MAPS.ME).



Alternatively, you can copy KML files to [the app folder](#). After that, you should open the bookmarks menu and press "**Convert**" button in the pop-up window.